

# kits & partitions

Adapting workspaces to the health crisis to better protect your teams and your clients

BERLIN 

PRODUCTS  
MADE IN  
CANADA



# 2 Preface

The World Health Organization recommendations to prevent the spread of the virus in the workplace include

- Ensure that the workspace remains clean and hygienic
- Promote regular and thorough hand washing to staff, suppliers and customers
- Promote good respiratory hygiene in the workplace: display posters, provide hand sanitizer, masks and paper towels

**Consult the complete document: Getting your workplace ready for Covid-19**

Our solution: simple and affordable kits to

- Promote prevention guidelines
- Provide hand sanitizer, masks and paper towels
- Direct traffic
- Provide changing areas
- Partition desks, dividers



# 3 Preface

Adapting workspaces to the health crisis

4-desk divider kit  
panoramic<sup>®</sup>  
h-line

Portable partition kit  
**contour.**

2-desk divider kit  
panoramic<sup>®</sup>  
h-line

Portable half-wall  
partition kit  
panoramic<sup>®</sup>  
h-line

Welcome kit  
& Hygiene station kit  
**one.r1 / xtension.squared**  
**3x2 /**  
**hard case.M counter**

Stationary partition kit  
panoramic<sup>®</sup>  
h-line

Portable changing room kit  
**contour.**

1-desk barrier kit  
**contour.**

& Stationary changing room kit  
panoramic<sup>®</sup>  
h-line



# 4

## Welcome kit

- 2 **one.r1** retractable bannerstands (31.5" x 79")
- 1 **xtension.squared 3x2** pop-up fabric display
- 1 **hard case.M counter** kit



Easily create your design: the artwork file already includes prevention guidelines

Send us your logo and background and we will customize it for you!

Adapting workspaces to the health crisis



# 5

## Hygiene station kit

3 essential kits to display prevention guidelines and distribute hand sanitizer



Hygiene station kit A

- 1 **one.r1** retractable bannerstand 31.5" x 79" (80 x 200 cm) with graphic
- 1 **hard case.M counter**

Budget-friendly version with **boost.** banner stand and vinyl graphic also available



Hygiene station kit B

- 1 **one.r1** retractable bannerstand 31.5" x 79" (80 x 200 cm) with graphic

Budget-friendly version with **boost.** banner stand and vinyl graphic also available



Hygiene station kit C

- 1 1' x 2' **wall.frame** (305 x 610 mm)  
SEG Fabric graphic

# 6 Welcome kit & Hygiene station kit

Your design

Adapting workspaces to the health crisis



1 **one.r1** retractable bannerstand  
31.5" x 79" (80 x 200 cm)

Budget-friendly version with **boost.** banner stand and vinyl graphic also available



1 **hard case.M** counter



Easily create your design: the artwork file already includes prevention guidelines

Send us your logo and background and we will customize it for you!



# Portable partition kit

10 **contour.** 5 x 6.5 foot walls with double-sided pillowcase graphics a total of 50 linear feet



Panels can be connected at 45°, 90° or 180° to partition custom spaces  
Lightweight, stable, and sets up in just a few minutes



**SVP**  
CORONA VIRUS, POUR SE PROTÉGER  
ET PROTÉGER LES AUTRES

COVID-19



Se laver  
régulièrement  
les mains



Tousser/Éternuer  
dans un mouchoir  
ou dans son coude



Utiliser un masque  
si on est malade



Ne pas aller au travail si on est  
malade ou si on a des symptômes

**energy**  
**SERVICE  
COMMERCIAL**  
Entrée  
←

# Stationary partition kit

50 linear feet of panoramic<sup>®</sup> h-line dividers using 38"x 93" panels  
Double-sided graphics. Available for rent or purchase

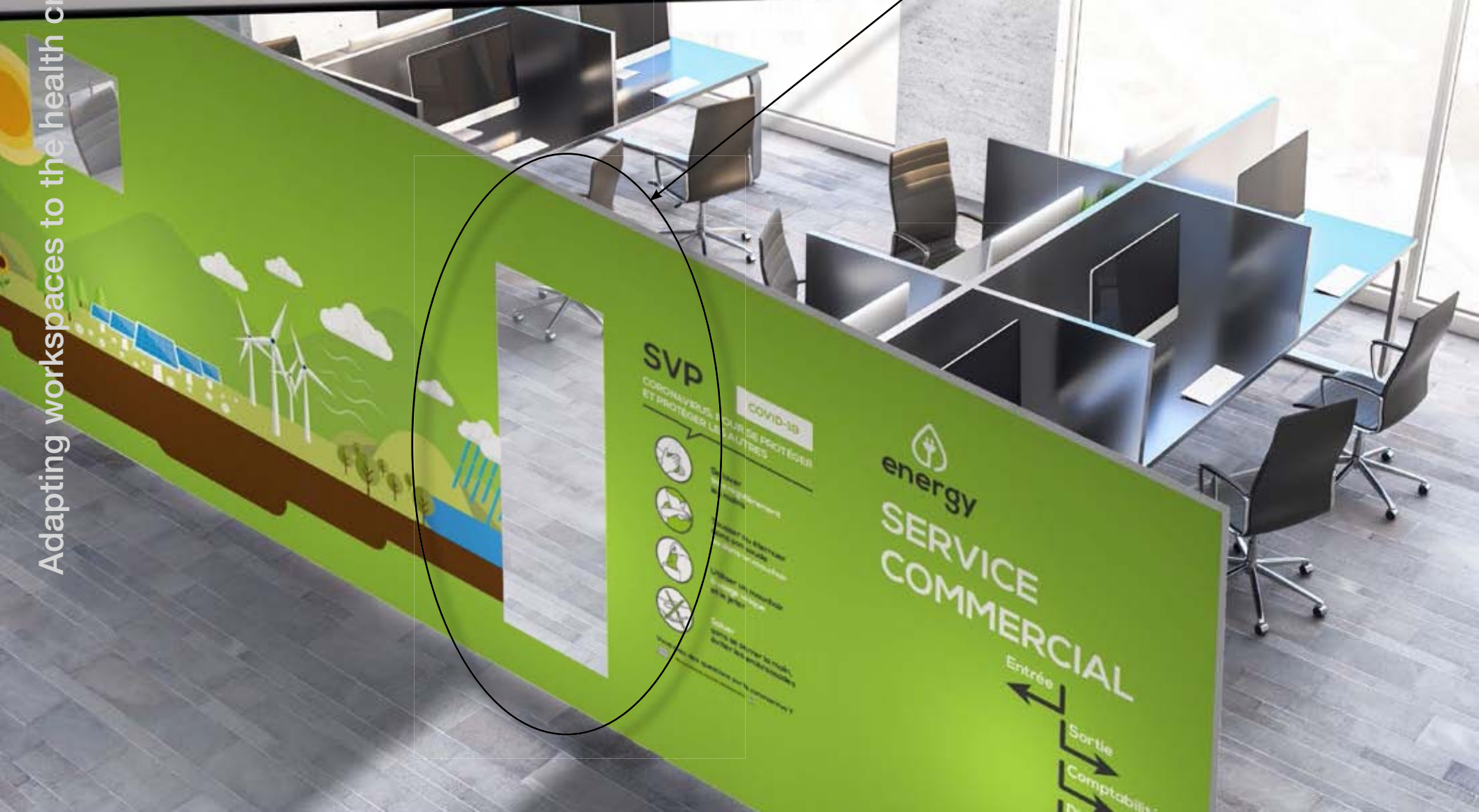


NEW: panoramic h-line panels with transparent sections

Panels can be connected at 90° or 180°

Delivered in a transport crate. Graphics are pre-installed for quick assembly.

Adapting workspaces to the health crisis



SVP  
CORONA VIRUS : TOUS SE PROTÈGER  
ET PROTÉGER LES AUTRES

COVID-19

- 1. Éviter les lieux publics
- 2. Éviter les rassemblements
- 3. Éviter les contacts étroits
- 4. Éviter les contacts prolongés
- 5. Éviter les contacts avec la toux

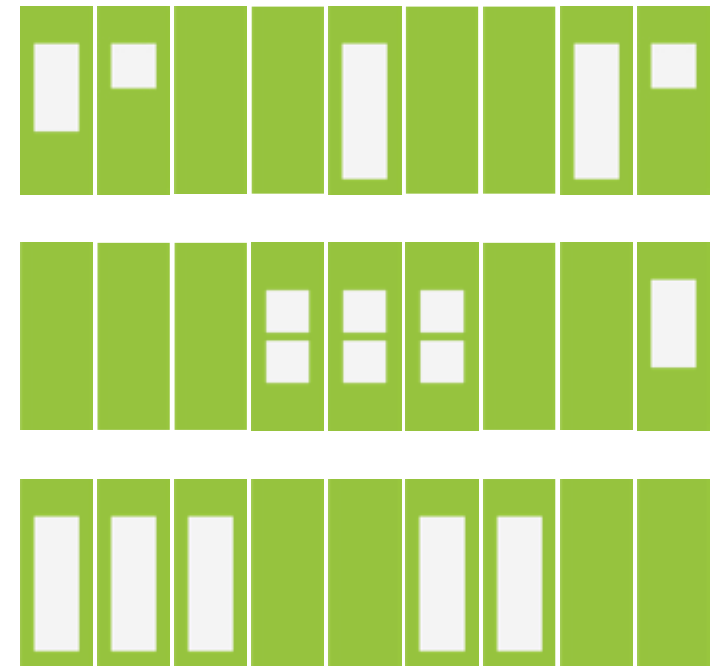
energy  
SERVICE  
COMMERCIAL

Entrée  
Sortie  
Comptabilité



# Stationary partition kit

NEW: Combine 4 transparent partition models to allow light to pass through while remaining hygienic



Many accessories and options available: TV, shelves, doors, lights, etc.



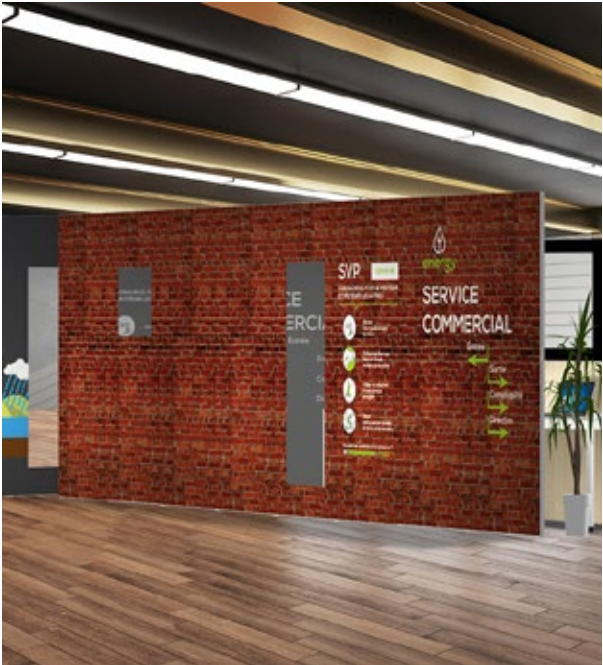
# 10 Stationary partition kit

Different textures available

Adapting workspaces to the health crisis



Concrete



Brick



Wood



White Brick



Stone



Ivy

11

# Portable half-wall partition kit

50 linear feet of half-wall <sup>panoramic</sup> <sub>in-line</sub> dividers using 38"x 46" panels  
Double-sided graphics. Available for rent or purchase



The most efficient solution to easily delimit spaces

Adapting workspaces to the health crisis



SVP

CORONA VIRUS POUR SE PROTÉGER ET PROTÉGER LES AUTRES

COVID-19



energy SERVICE CO

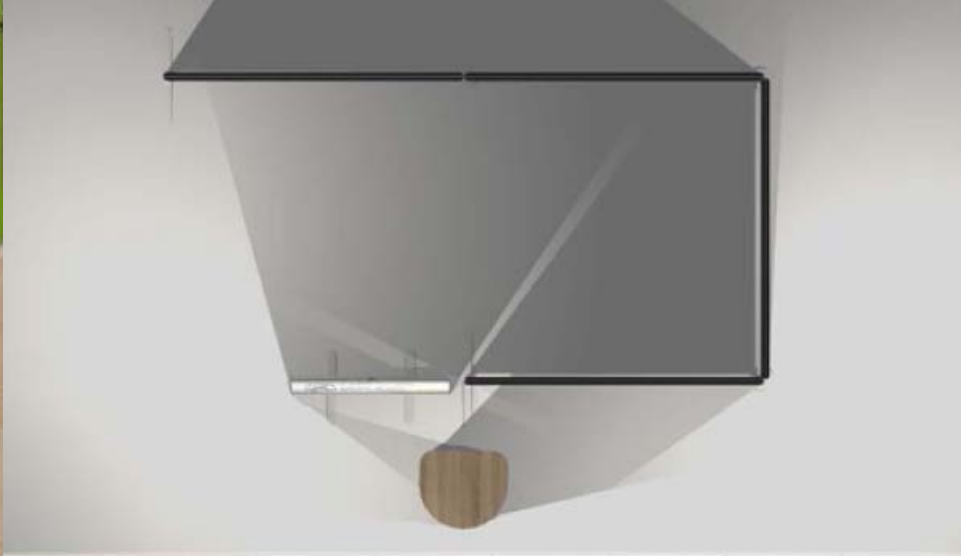
# 12 Portable changing room kit

- 4 **contour.** 5 x 6.5 foot panels
- + 1 **one.R1** retractable bannerstands
- + 1 **hard case.M counter**



Lightweight and easy to install

Adapting workspaces to the health crisis



# 13 Stationary changing room kit

- 3 38"x 93" panoramic panels
- + 1 **one.R1** retractable bannerstands
- + 1 **hard case.M** counter



Uses the same panels as those in the stationary partition kit  
Combine to suit your needs!

Adapting workspaces to the health crisis



# 14 2-desk divider kit

To place between desks

2 lower 38"x 46" frames

+ 2 top 38"x 38" transparent frames



New panoramic<sup>®</sup>  
inline  
transparent half-walls



Adapting workspaces to the health crisis



# 15 4-desk divider kit

To place between desks

6 lower 38"x 46" frames

+ 6 top 38"x 38" transparent frames



New panoramic<sup>®</sup>  
transparent half-walls

Adapting workspaces to the health crisis



# 16 **contour.** barrier kit

24"x 24" contour structure



Lightweight and easy to move  
contour barrier kit

Sets up within 2 minutes

Available in custom dimensions

Adapting workspaces to the health crisis



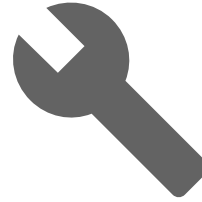


# 17 Benefits of our kits and partitions

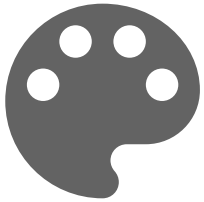
Adapting workspaces to the health crisis



Large quantities **in stock**, available quickly.



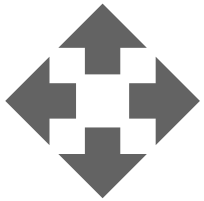
**No training required:** no technical expertise or tools required. **Simple and easy setup.**



Easily create artwork files thanks to a **library of customizable "prevention guidelines" and decor graphics.**



A lasting investment **that can be reused for events after the crisis.**



Arrange all spaces **in a scalable and reusable way.** Available **in custom dimensions.**



Lightweight aluminium frames covered in **changeable, washable fabric.**



T 514 939-3600

For more information or to place an order, contact:  
[info@BERLINdisplays.com](mailto:info@BERLINdisplays.com)